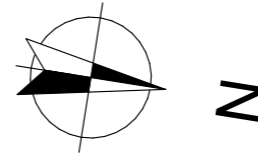


LES BORÉALES

DE SAINT-PRYVÉ

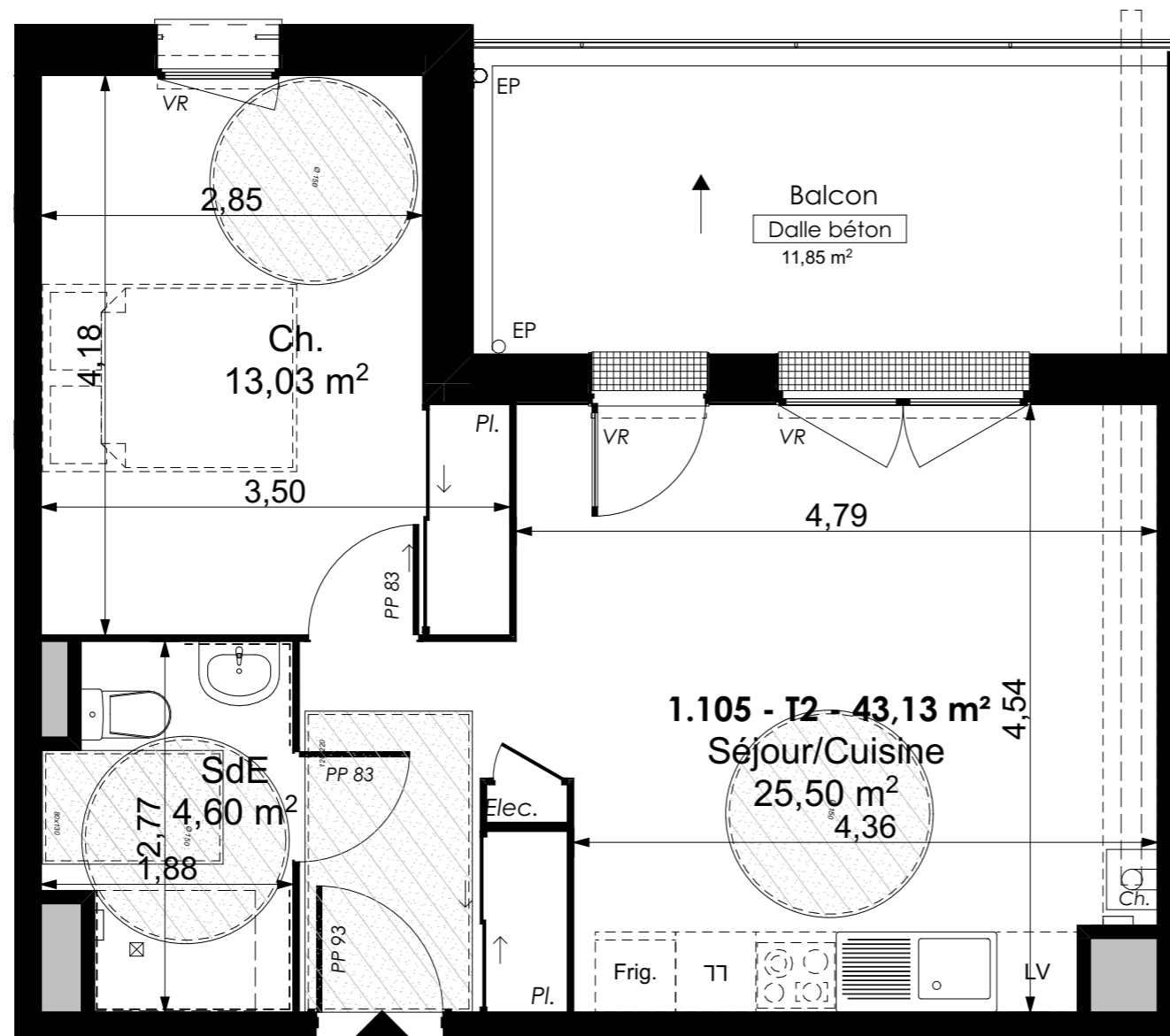


Valloire Habitat

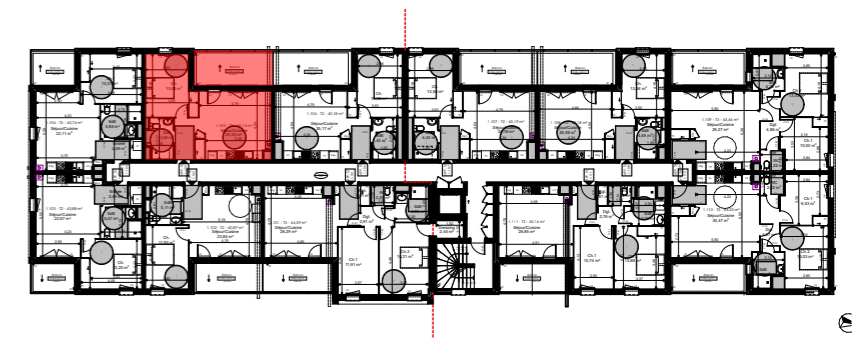
Groupe ActionLogement

28 bis rue du Gros Raisin
45750 SAINT-PRYVE-SAINT-MESMIN

Les BoRéales de Saint-Pryvé



TYPE T2 - LOGEMENT 1-105 R+1		
Séjour/Cuisine		25,50 m ²
SdB		4,60 m ²
Ch. 1		13,03 m ²
Total surfaces habitables		43,13 m ²
Annexes		Surf. Utile
Balcon		11,85 m²
Total surfaces Annexes		11,85 m ²
	TOTAL SURFACES	54,98 m ²



15/11/2022	Indice C
Ech : 1:50	
0.00	0.50
1.00	2.00
	3.00